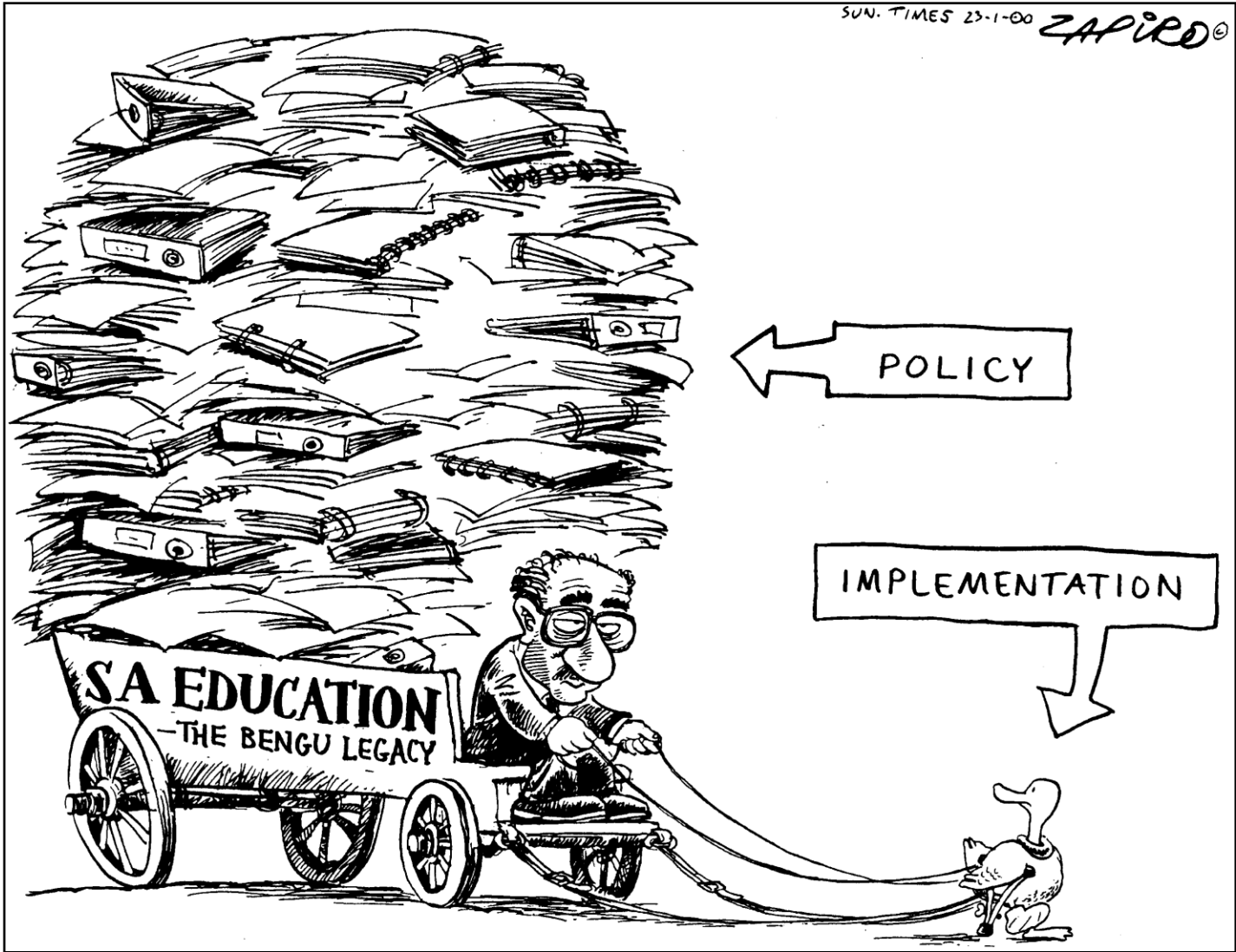



PHC re-engineering: challenges

Helen Schneider

School of Public Health, University of Western Cape

Building partnerships to implement community based health services in PHC, 20 Sep 2011





Too hasty, less speed



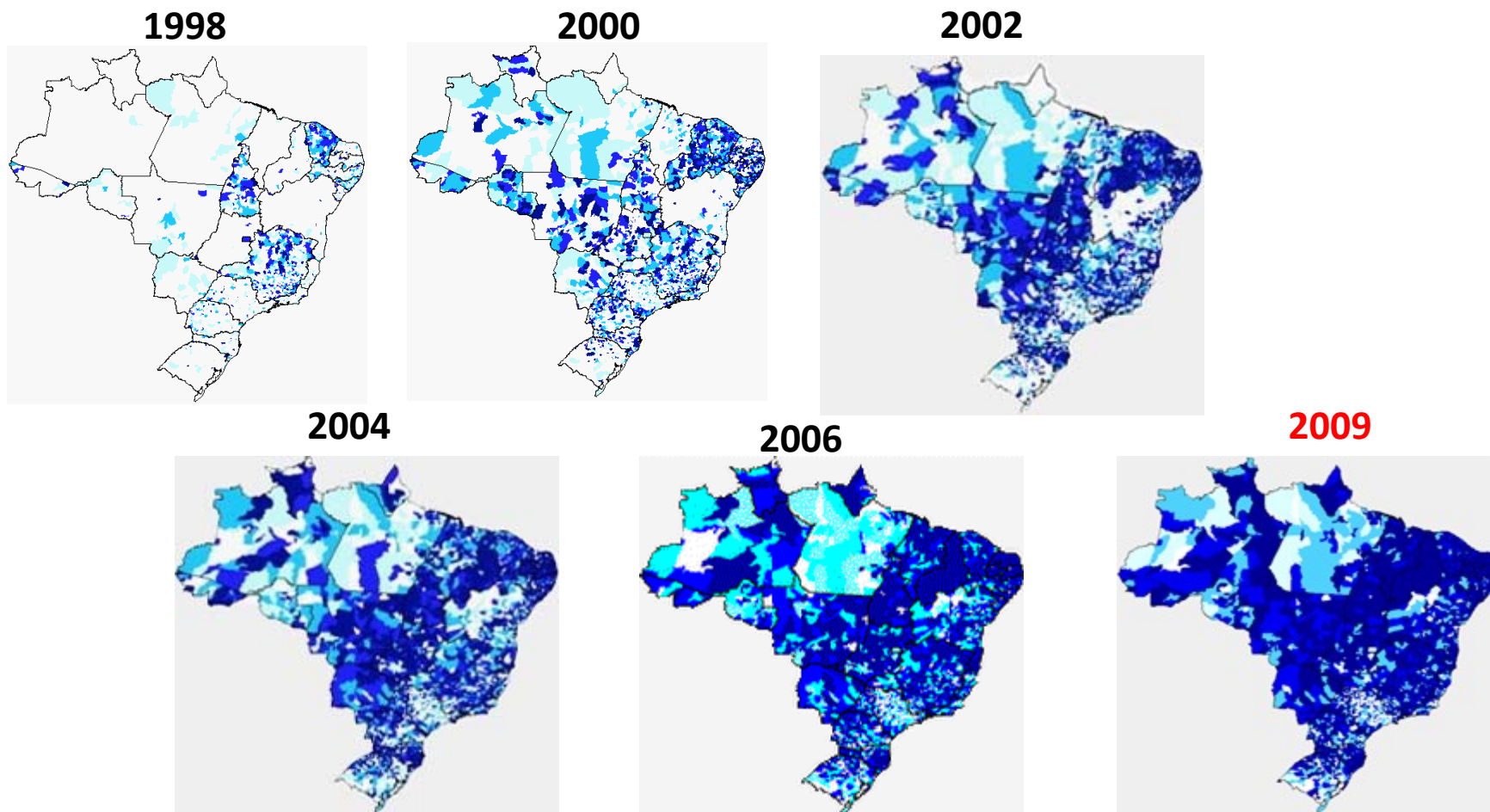
National Service Delivery Agreement

2010-2014

- ▶ Outcome 2: a long and healthy life for all South Africans
 - ▶ Output 1: Increasing life expectancy
 - ▶ Output 2: Decreasing maternal and child mortality rates
 - ▶ Output 3: Combating HIV and AIDS and decreasing the burden of disease from TB
 - ▶ Output 4: Strengthening health system effectiveness

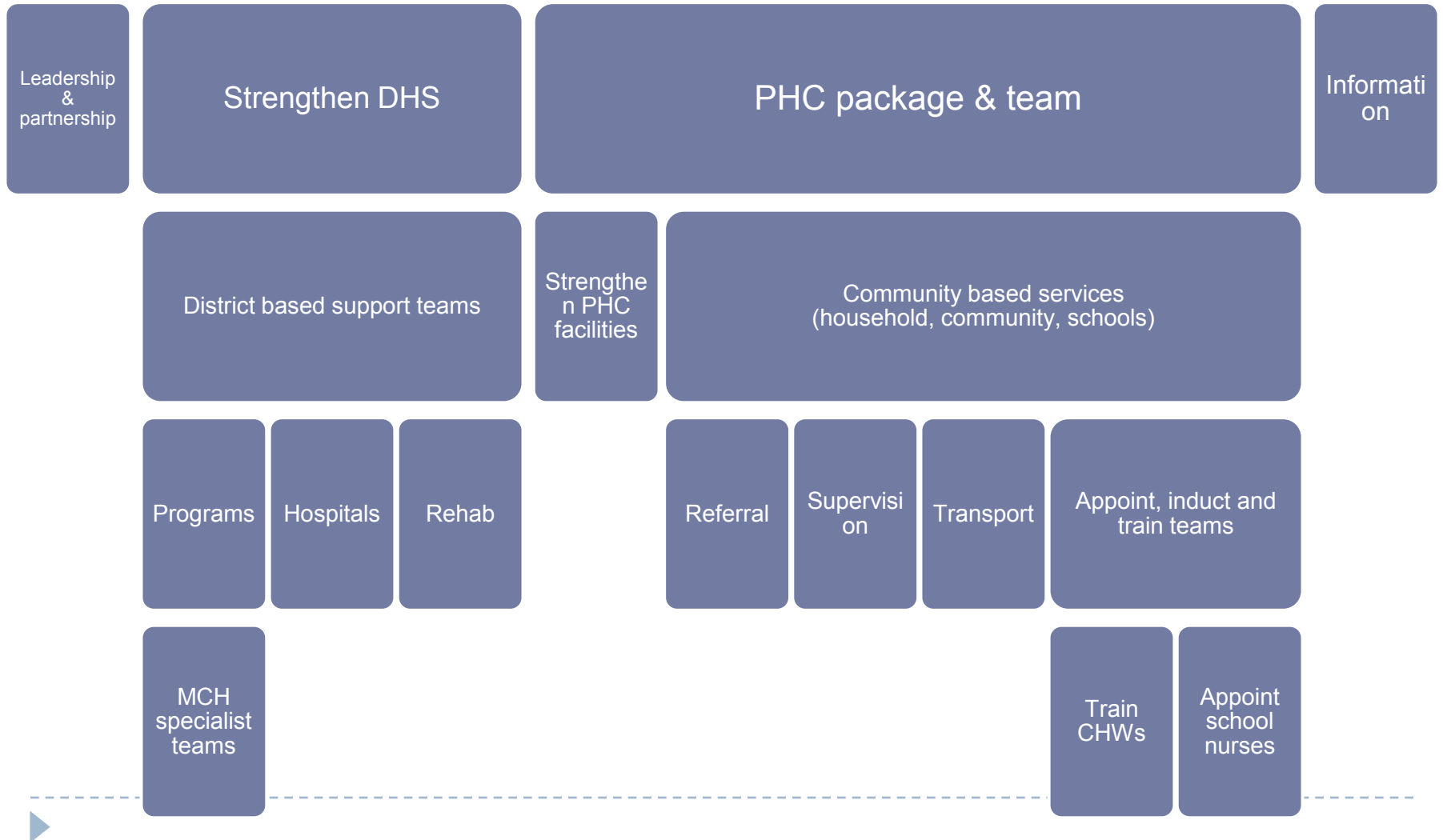


Brazil: PHC team coverage



Not keeping the whole system in
focus

PHC re-engineering



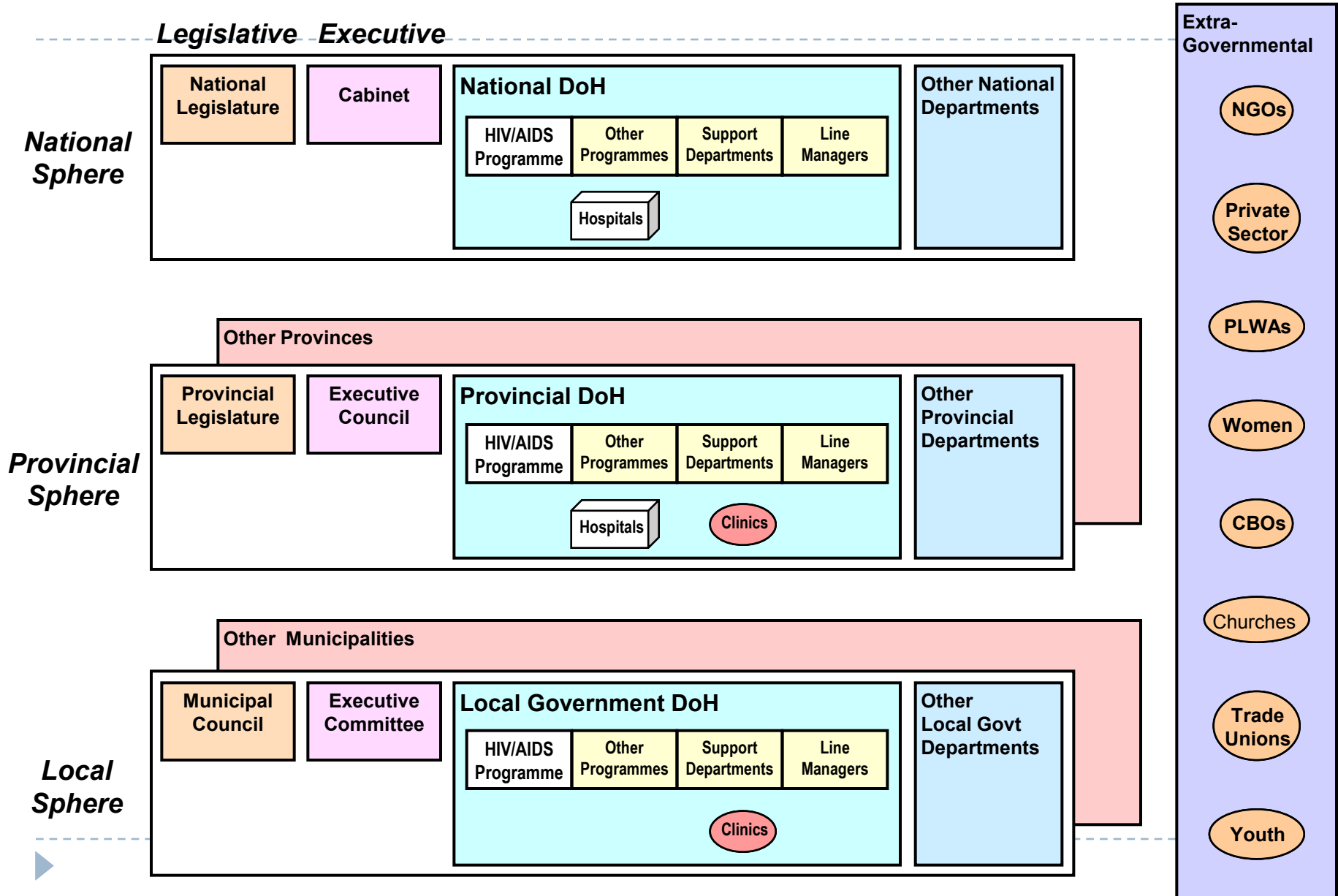
PHC and District Health System

- ▶ Uneven DHS implementation
- ▶ Growing nursing crisis
- ▶ Weak support/supervision, transport, drug supplies, etc. etc.
- ▶ Role of counsellors (CHW audit report)

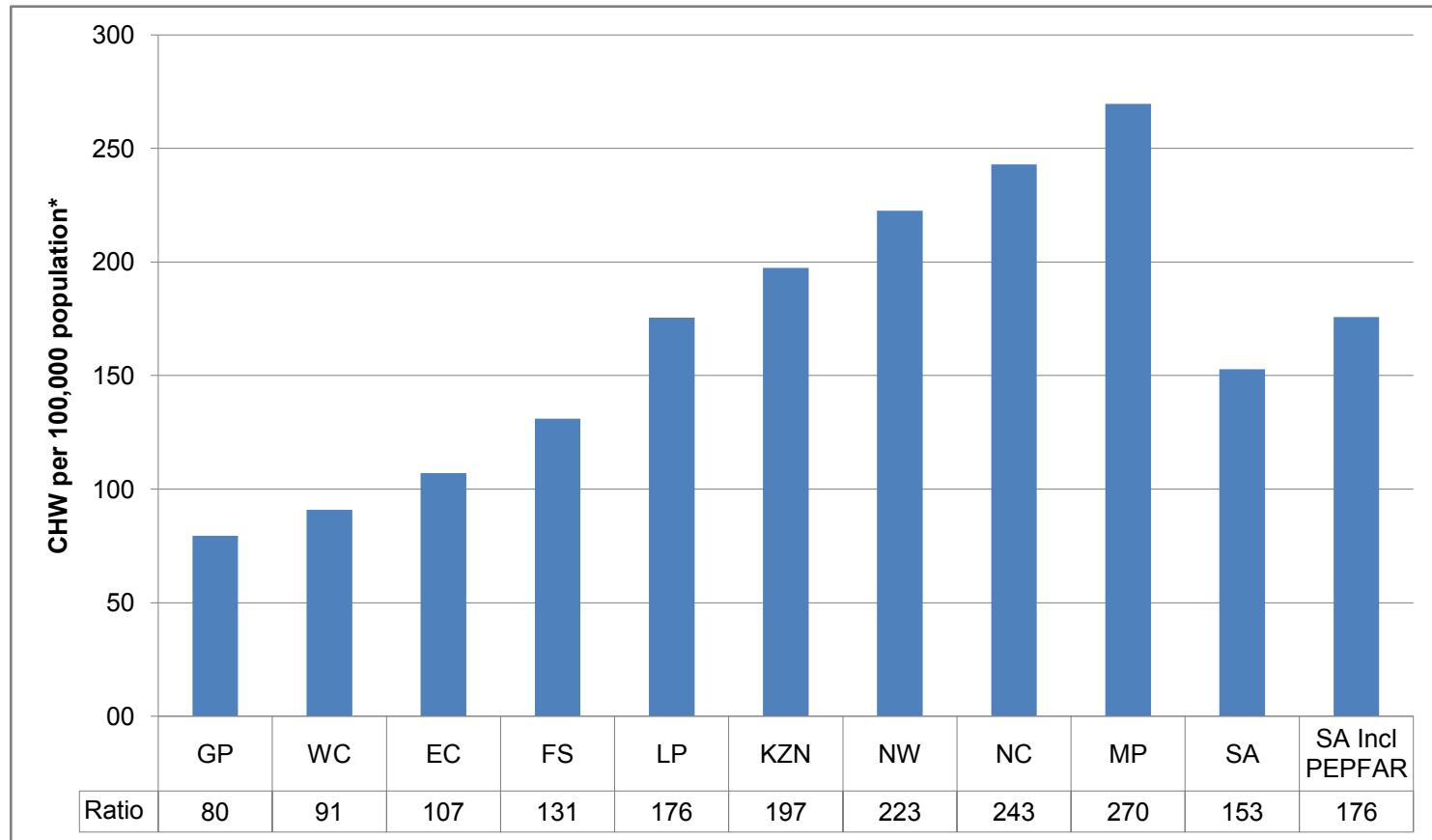


Not keeping everyone on the same page (or at least in the same book)

Stakeholders

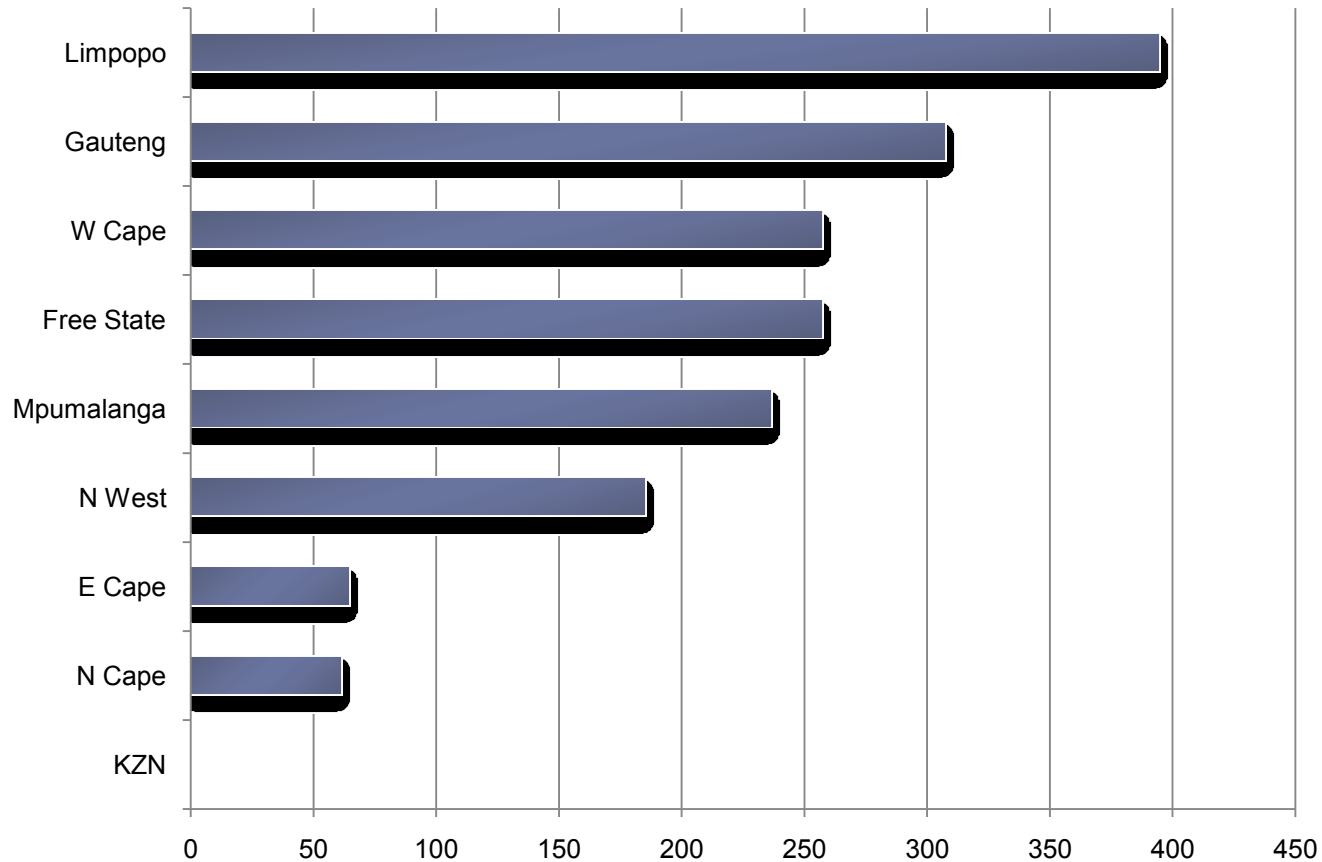


Provincial coordination



Distribution of CHWs/100,000 population (un-insured) (CHW audit 2011)

NPO-government coordination




Health related NPOs contracted to provincial governments (CHW audit, 2011)
(+1,700 NPOs contracted too provincial governments; +1,000 donor
funded)

Local coordination:


Terminology for CHWs in Khayelitsha

- ▶ Abanalekeli
 - ▶ Care aids
 - ▶ Carer
 - ▶ CDC facilitators
 - ▶ Child Care Worker Coach
 - ▶ Community Care workers
 - ▶ Community carers
 - ▶ Community Health Advocate (CHA)
 - ▶ Community Health Care Workers
 - ▶ Community Health workers
 - ▶ Community workers
 - ▶ Counsellor
 - ▶ Educators
 - ▶ Facilitators
 - ▶ Field worker
 - ▶ Hlanganani Facilitator and Hlanganani Recruiter (based in Khayelitsha)
 - ▶ Home based carers
 - ▶ Home carers
 - ▶ Lay counsellors
 - ▶ Mentors
 - ▶ Peace workers
 - ▶ PTC
 - ▶ Student Volunteers
 - ▶ Trainers
 - ▶ Treatment Literacy and Prevention Practitioners
 - ▶ Volunteer
 - ▶ Youth Worker
-





Preventing unintended consequences



Falling role of non-state actors

- ▶ Short and long term roles of NPOs:

- ▶ Employment
- ▶ Service delivery
- ▶ Support systems

- ▶ NPOs:

CBOs, national, international

- ▶ Civil society

- ▶ Unions

Conflict rather than coordination
across sectors

Relationship of health sector strategy

▶ **To:**

- ▶ Home and Community Based Care, Dept Social Development
- ▶ Community Development Workers
- ▶ Early Childhood Development...

▶ **Issues**

- ▶ Service delivery
- ▶ Workers
- ▶ M&E systems





Local operational challenges



Capacity building for:

- ▶ Fomalisation, reorientation and integration of community based services
- ▶ Shift from a referral system to a proactive approach to households
- ▶ Strengthening support systems
- ▶ Establish monitoring and evaluation systems
- ▶ Preparing other services and providers





Thank you!

