



health

Department:  
Health

PROVINCE OF KWAZULU-NATAL

# PHC Outreach Teams Symposium

20-22 September 2011

KZN DOH

Londa Langa



# BACKGROUND

- No. of community based programmes - govt funded
- Not integrated and lack intergovernmental co-ordination
- Fragmented nature leads to disjointed govt services
- Difficult to monitor impact – devoid of community feedback



# What has happened...

- Absorption of 9225 care givers (CHWs & HBCs) & contracted to the DOH
- Captured on PERSAL(temporal)
- Stipend between R1500 & R2000
- Condition of Service linked to Ministerial Determination EPWP Social Sector Incentive Grant
- Deployed in all 11 districts



# District allocation

| District      | Number of CCGs |
|---------------|----------------|
| Umgungundlovu | 812            |
| Sisonke       | 848            |
| Uthukela      | 736            |
| Umzinyathi    | 472            |
| Amajuba       | 400            |
| Ethekwini     | 1882           |
| Ugu           | 900            |
| Ilembe        | 812            |
| Umkhanyakude  | 802            |
| Zululand      | 753            |
| UThungulu     | 808            |



# What are we doing...

- Allocated 60 households per Community Care Giver
- Visiting 3 household per day
- Linking them to clinics per catchment area
- Ensuring covering of all wards
- Reporting to war rooms once a week (Operation Sukuma Sakhe)



# Scope of practice

- Household and community profiling
- Health promotion
- Conduct home visits
  - Provision of basic home & palliative care
  - Identification of OVCs and other vulnerable groups
  - Conduct environmental health assessment to identify & manage health risks
  - Assess family health cards, to identify illnesses for support, advice and refer



# Scope of practice

- Treatment adherence support
- Linking community members to resources
- Make appropriate referrals
- Distribution of condoms
- Data collection
- Compile reports



# How are they monitored...

- 15 CCGs report to a CCG Supervisor
- 4 CCG Supervisors report to Community Health Facilitator
- Community Health Facilitator report to PHC Supervisor(Sub District Level)
- SO3 Data Collection Tool developed with DSD National



# Who capacitates them...

- Amatigulu PHC Training Centre develops curriculum-one-year training towards a qualification
- Trains Community Health Facilitators – Facilitators' Course
- CHF's cascade training to CCGs at Sub district level
- Career pathing in nursing has been done to more than 300 CCGs (ENA & ENs)



# Partnership with NPOs

- Acknowledge and value the contribution
- Collaborate activities with NPOs funded by other funding agencies
- Not limited to community based services but extends to health facilities
- Identify and procure services from NPOs - catalogue

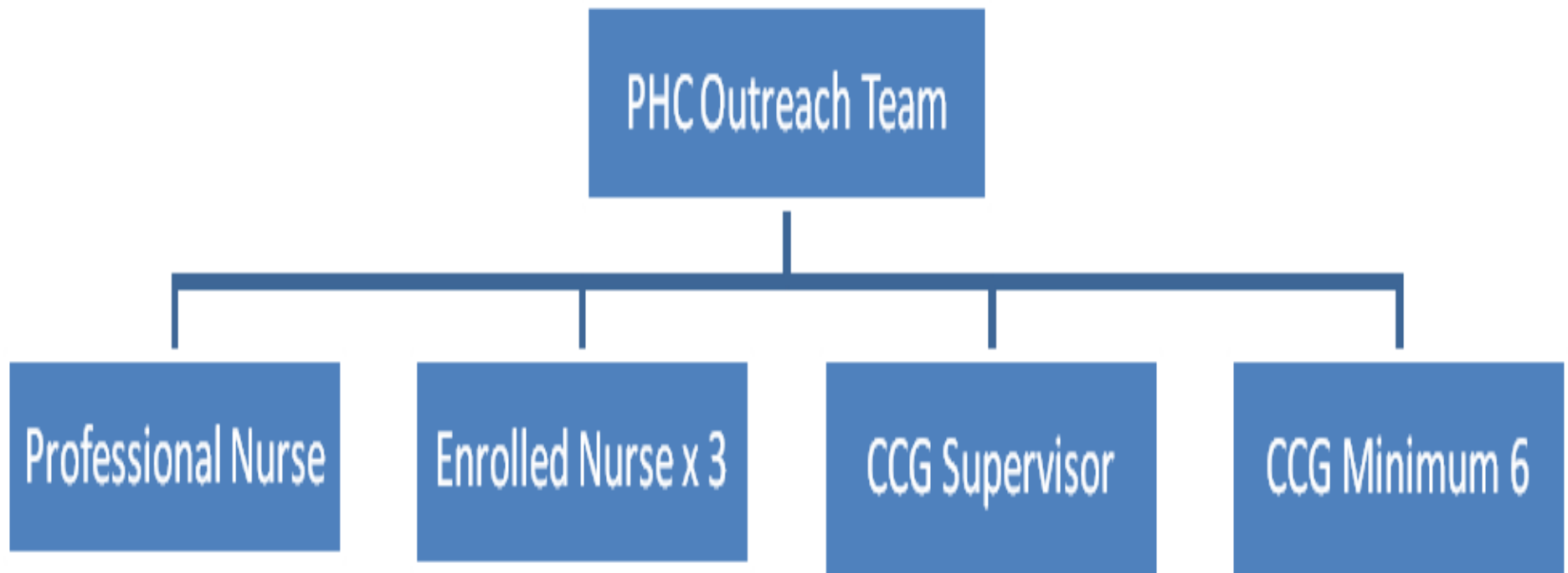


# Desired Model to PHC Outreach...

- Professional Nurse
- Enrolled Nurses x3
- CCG Supervisors
- Minimum 6 CCGs
- Linked to a PHC Facility



# Continued...





# Conclusion

- Partnerships should not depend on the availability of funds from government
- NPOs to source funding from other funding agencies .
- War Rooms(Ward based)- engine room for multisectoral interventions



health

Department:  
Health  
PROVINCE OF KWAZULU-NATAL

# Ngiyazibongela

